

# Introduction to DBMS

- Purpose of Database Systems
- View of Data
- Data Models
- Data Definition Language
- Data Manipulation Language
- Transaction Management
- Storage Management
- Database Administrator
- Database Users
- Overall System Structure

# Database Management System (DMBS)

- Collection of interrelated data
- Set of programs to access the data
- DMBS contains information about a particular enterprise
- DBMS provides an environment that is both convenient and efficient to use

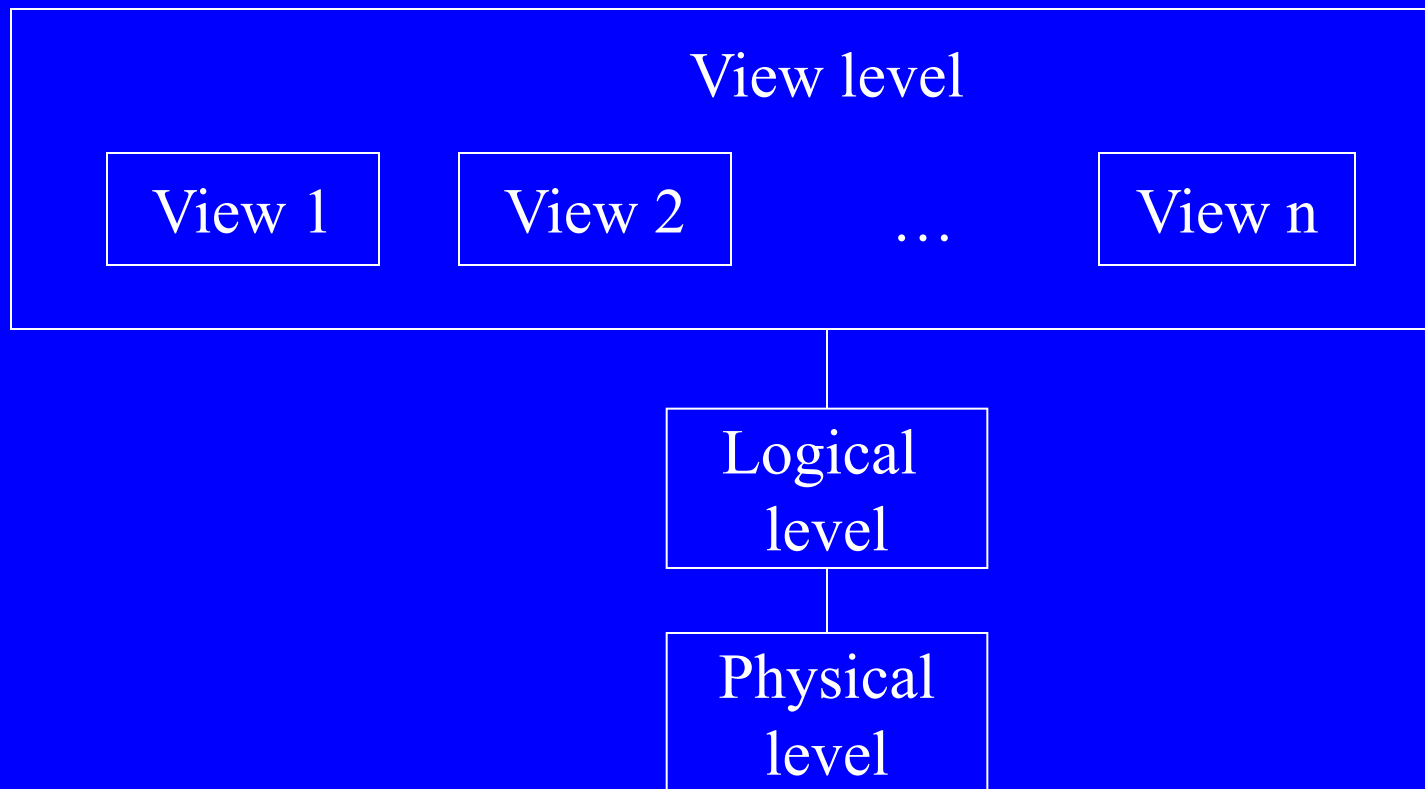
# Purpose of Database Systems

Database management systems were developed to handle the following difficulties of typical file-processing systems supported by conventional operating systems:

- Data redundancy and inconsistency
- Difficulty in accessing data
- Data isolation – multiple files and formats
- Integrity problems
- Atomicity of updates
- Concurrent access by multiple users
- Security problems

# View of Data

An architecture for a database system



# Levels of Abstraction

- Physical level: describes how a record (e.g. customer) is stored.
- Logical level: describes data stored in database, and the relationships among the data.

```
type customer = record
    name: string;
    street: string;
    city: integer;
end;
```

- View level: application programs hide details of data types. Views can also hide information (e.g. salary) for security purposes.

# Instances and Schemas

- Similar to types and variables in programming languages
- Schema – the logical structure of the database (e.g., set of customers and accounts and the relationship between them)
- Instance – the actual content of the database at a particular point in time

# Data Independence

- Ability to modify a schema definition in one level without affecting a schema definition in the other levels.
- The interfaces between the various levels and components should be well defined so that changes in some parts do not seriously influence others.
- Two levels of data independence
  - Physical data independence
  - Logical data independence

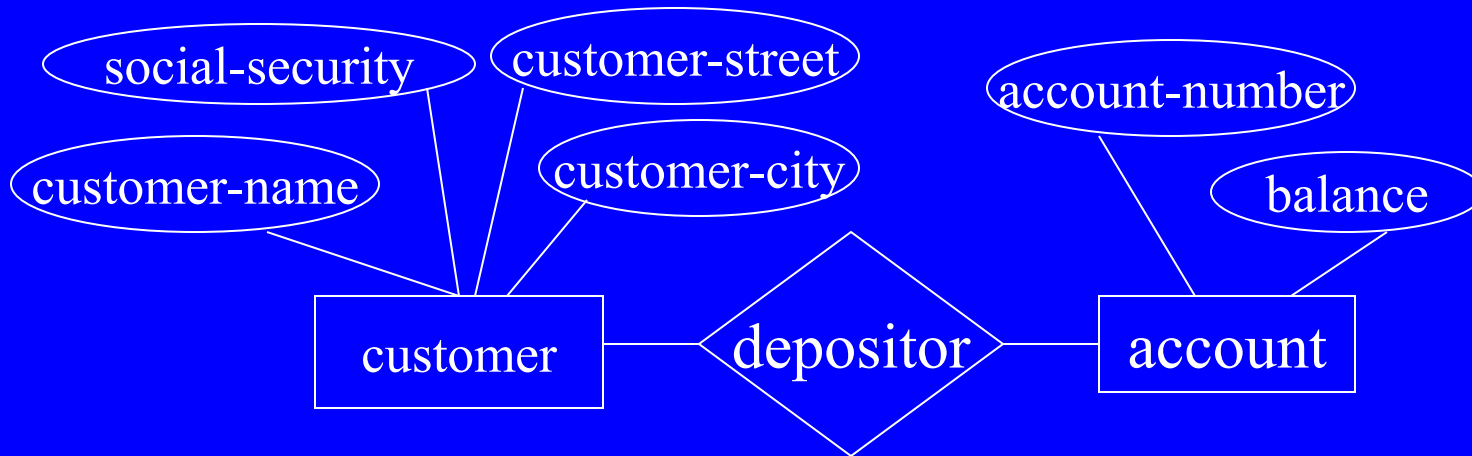
# Data Models

- A collection of tools for describing:
  - Data
  - Data relationships
  - Data semantics
  - Data constraints
- Object-based logical models
  - Entity-relationship model
  - Object-oriented model
  - Semantic model
  - Functional model
- Record-based logical models
  - Relational model (e.g., SQL/DS, DB2)
  - Network model
  - Hierarchical model (e.g., IMS)



# Entity-Relationship Model

Example of entity-relationship model



# Relational Model

Example of tabular data in the relational model:

<b>name</b>	<b>ssn</b>	<b>street</b>	<b>city</b>	<b>account-number</b>
Johnson	192-83-7465	Alma	Palo Alto	A-101
Smith	019-28-3746	North	Rye	A-215
Johnson	192-83-7465	Alma	Palo Alto	A-201
Jones	321-12-3123	Main	Harrison	A-217
Smith	019-28-3746	North	Rye	A-201

<b>account-number</b>	<b>balance</b>
A-101	500
A-201	900
A-215	700
A-217	750

# Data Definition Language (DDL)

- Specification notation for defining the database schema
- DDL compiler generates a set of tables stored in a data dictionary
- Data dictionary contains *metadata* (data about data)
- Data storage and definition language – special type of DDL in which the storage structure and access methods used by the database system are specified

# Data Manipulation Language (DML)

- Language for accessing and manipulating the data organized by the appropriate data model
- Two classes of languages
  - Procedural – user specifies what data is required and how to get those data
  - Nonprocedural – user specifies what data is required without specifying how to get those data

# Transaction Management

- A transaction is a collection of operations that performs a single logical function in a database application.
- Transaction-management component ensures that the database remains in a consistent (correct) state despite system failures (e.g. power failures and operating system crashes) and transaction failures.
- Concurrency-control manager controls the interaction among the concurrent transactions, to ensure the consistency of the database.

# Storage Management

- A storage manager is a program module that provides the interface between the low-level data stored in the database and the application programs and queries submitted to the system.
- The storage manager is responsible for the following tasks:
  - Interaction with the file manager
  - Efficient storing, retrieving, and updating of data

# Database Administrator

- Coordinates all the activities of the database system; the database administrator has a good understanding of the enterprise's information resources and needs:
- Database administrator's duties include:
  - Schema definition
  - Storage structure and access method definition
  - Schema and physical organization modification
  - Granting user authority to access the database
  - Specifying integrity constraints
  - Acting as liaison with users
  - Monitoring performance and responding to changes in requirements

# Database Users

- Users are differentiated by the way they expect to interact with the system.
- **Application programmers:** interact with system through DML calls.
- **Specialized users:** write specialized database applications that do not fit into the traditional data processing framework
- **Sophisticated users:** form requests in a database query language.
- **Naive users:** invoke one of the permanent application programs that have been written previously



# Overall System Structure

