

Control Statements

UNIT-III

C language has four types of control statements

1. if..else
2. goto
3. switch
4. loops
 - while
 - do..while
 - for

Compound Statement or Block

- Is a group of statements enclosed within the pair of curly braces. The statements inside the block are executed sequentially.

```
{  
    statement1;  
    statement2;  
    statemnet3;  
}
```

if..else

- Syntax1

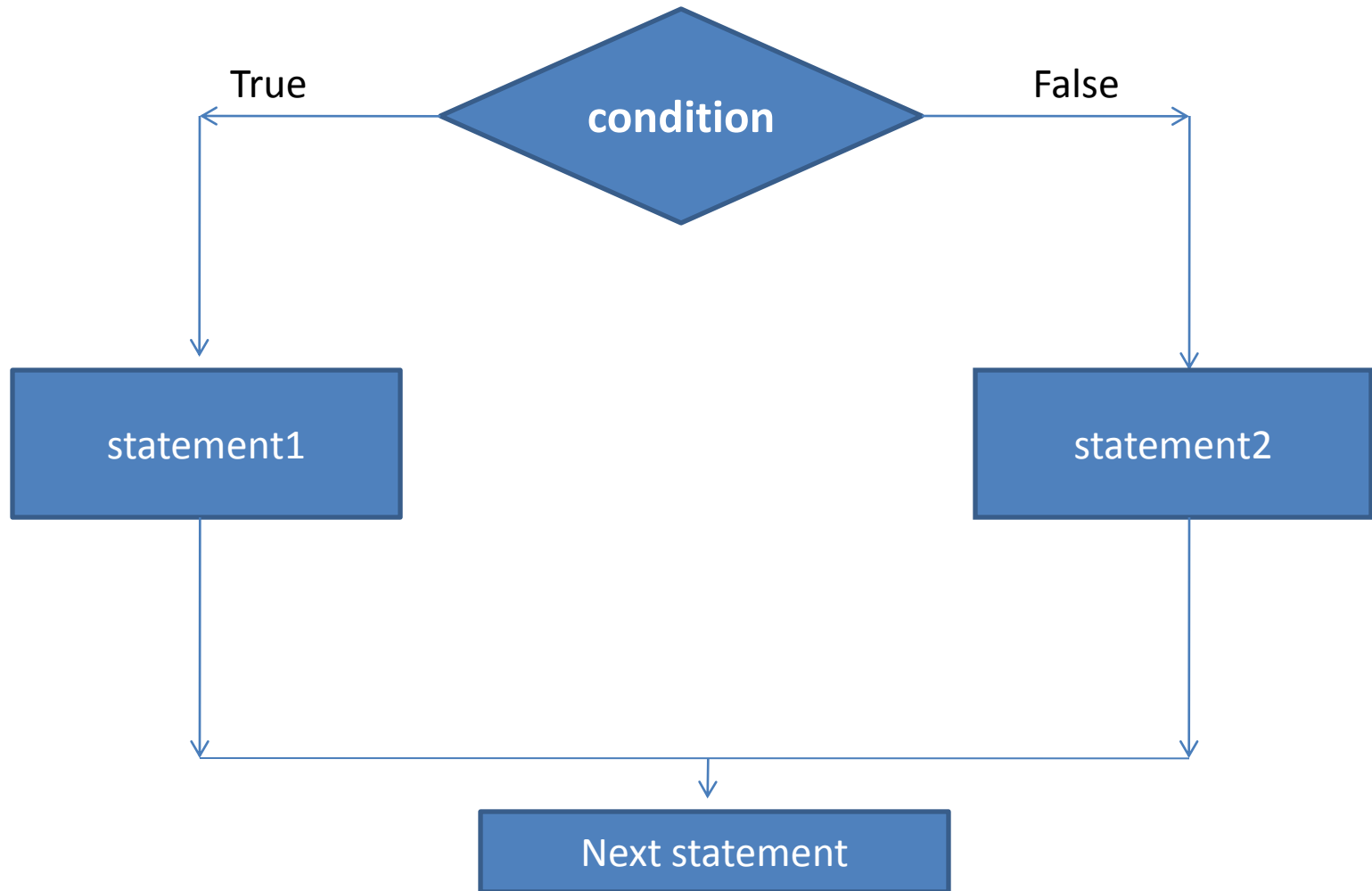
```
if(condition)
    statement1;
```

- Syntax2

```
if(condition)
    statement1;
else
    statemnet2;
```

```
if(condition)
{
    statement1;
    statement2;
}
else
{
    statement3;
    statement4;
}
```

Flowchart of if..else



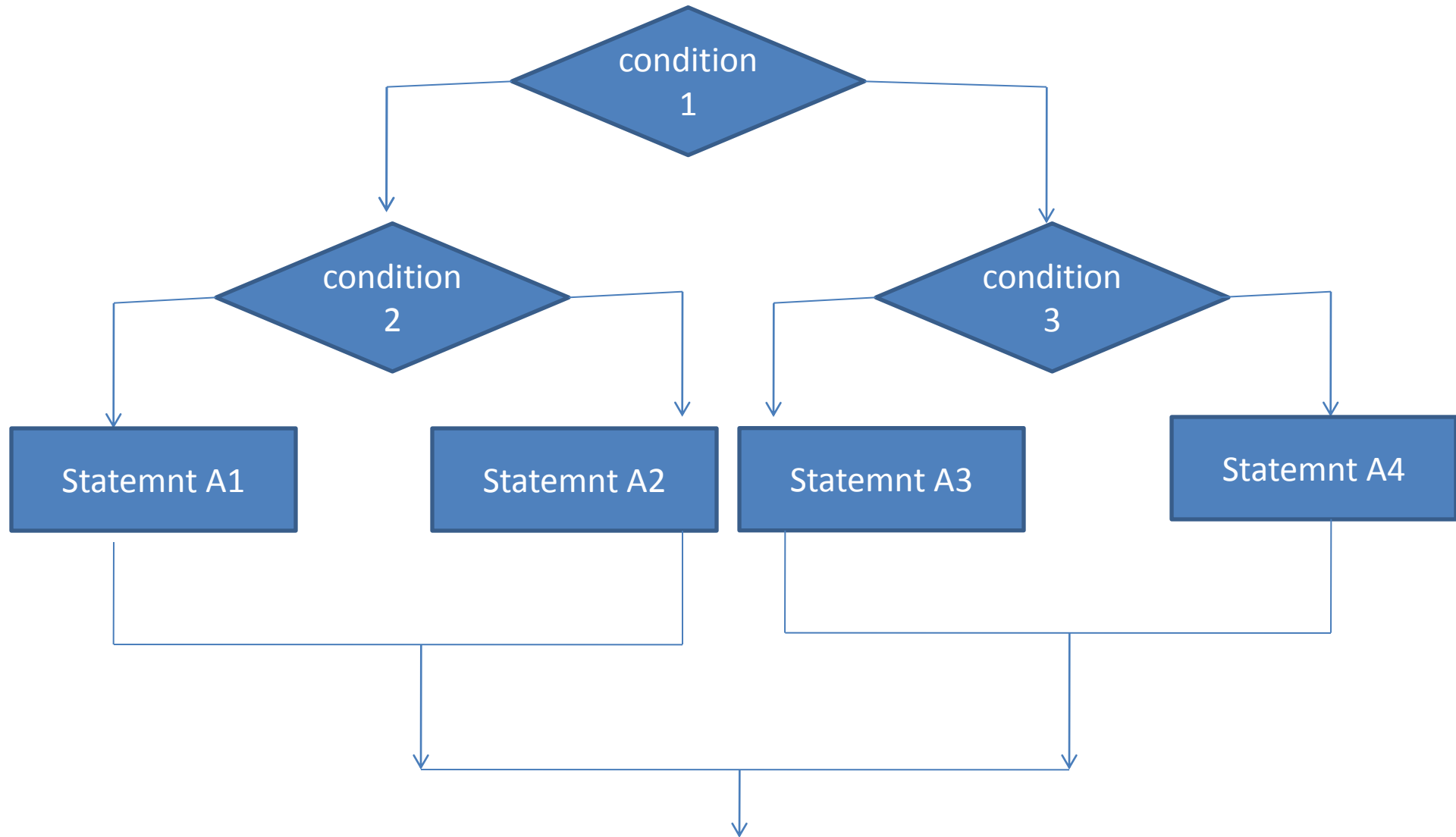
WAP to print whether the number is even or odd

```
#include<stdio.h>
#include<conio.h>
void main()
{
int num;
clrscr();
scanf("%d", &num);
if(num%2==0)
    printf("num is even");
else
    printf("number is odd");
getch();
}
```

Nesting of if...else

```
if(condition1)
{
    if(condition2)
        statement A1;
    else
        statement A2;
}
else
{
    if(condition3)
        statement A3;
    else
        statement A4;
}
```

Nesting of if...else




```
#include<stdio.h>
#include<conio.h>
void main()
{
int a, b, c;
clrscr();
scanf(“%d%d%d”, &a,&b,&c);
if(a>b)
{
    if(a>c)
        printf(“larger=a”);
    else
        printf(“larger=c”);
}
else
```

WAP to find largest
among three
numbers.

```
{
    if(b>c)
        printf(“larger=b”);
    else
        printf(“larger=c”);
}
getch();
}
```

- WAP to find out the grade of a student when the marks of four subjects are given. The method of assigning grade is:

percent \geq 85 grade=A

percent $<$ 85 and percent \geq 70 grade=B

percent $<$ 70 and percent \geq 55 grade=C

percent $<$ 55 and percent \geq 40 grade=D

percent $<$ 40 grade=E

```
#include<stdio.h>
#include<conio.h>
void main()
{
float m1,m2,m3,m4,total,per;
printf("enter marks of 4 subjects");
scanf("%f%f%f%f",&m1,&m2,&m3,&m4);
total=m1+m2+m3+m4;
per=(total/400)*100;
if(per>=85)
    printf("grade=A");
else if(per>=70)
```

```
    printf("grade=B");
else if(per>=55)
    printf("grade=C");
else if(per>=40)
    printf("grade=D");
else
    printf("grade=E");
getch();
}
```